

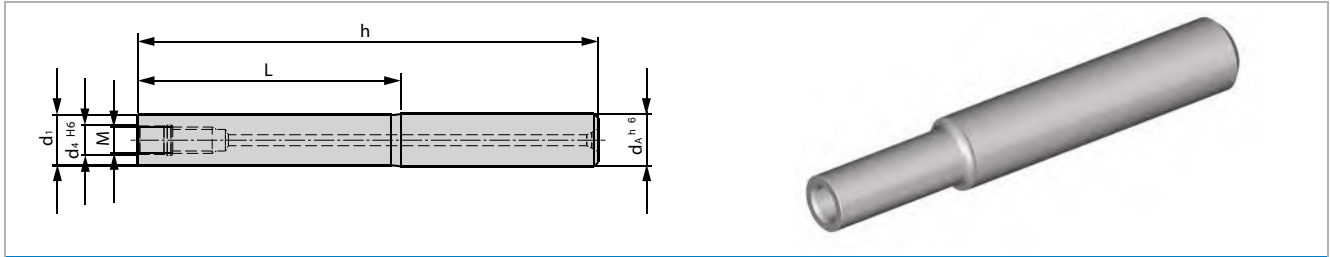
bilz

boehlerit

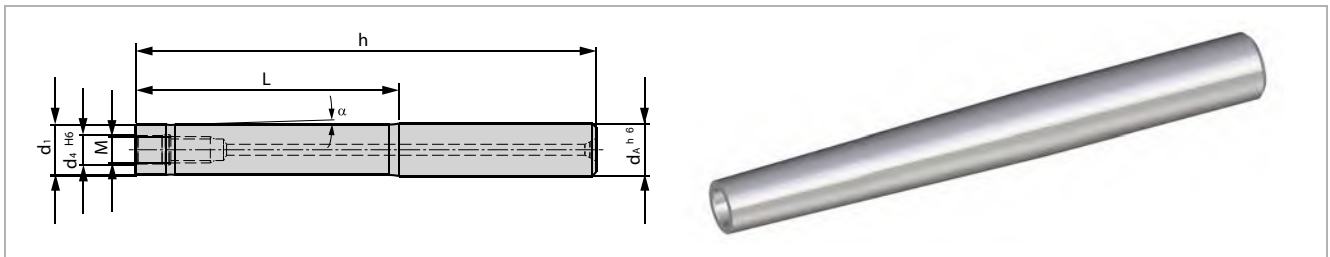
Verlängerungen
Extensions
Aufnahmen
Chucks



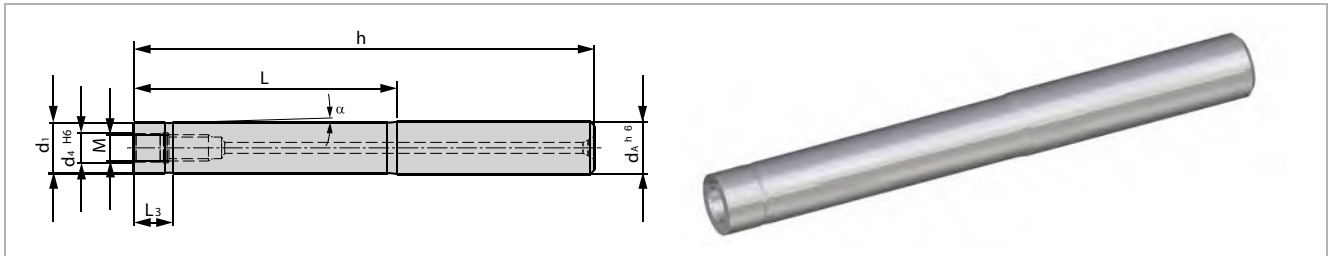
Vollhartmetall-Verlängerungen für Einschraubwerkzeug
Solid carbide extensions for screw on type milling cutter



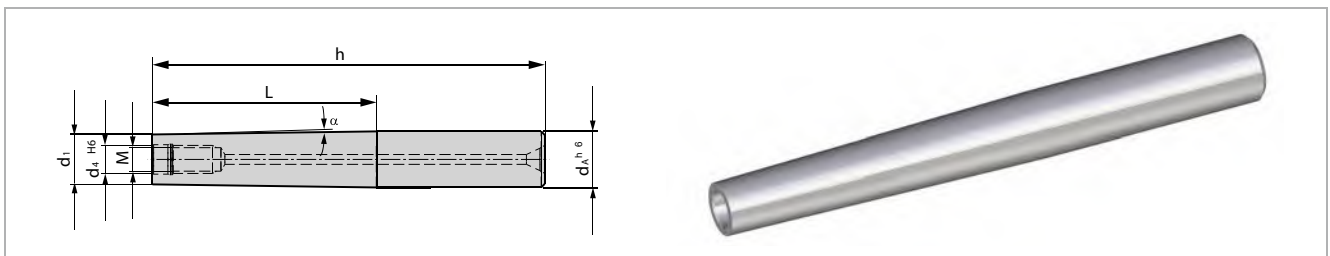
| M | d_4^{H6} | d_1 | d_A^{h6} | L | h | Bestellbezeichnung Ordering code | Material-Nr. Material-No. | Verfügbarkeit Availability |
|-----|------------|-------|------------|----|----|-------------------------------------|------------------------------|-------------------------------|
| 4,5 | 4,8 | 7,7 | 10 | 20 | 65 | Z 10.020 M4,5 | 5153592 | ● |



| M | d_4^{H6} | d_1 | d_A^{h6} | α | L | h | Bestellbezeichnung Ordering code | Material-Nr. Material-No. | Verfügbarkeit Availability |
|-----|------------|-------|------------|----------|-----|-----|-------------------------------------|------------------------------|-------------------------------|
| 4,5 | 4,8 | 7,7 | 10 | 1,65° | 40 | 85 | K 10.040 M4,5 | 5153620 | ● |
| 4,5 | 4,8 | 7,7 | 10 | 1,1° | 60 | 105 | K 10.060 M4,5 | 5153854 | ● |
| 4,5 | 4,8 | 7,7 | 10 | 0,82° | 80 | 130 | K 10.080 M4,5 | 5153855 | ● |
| 4,5 | 4,8 | 7,7 | 10 | 0,66° | 100 | 150 | K 10.100 M4,5 | 5153863 | ● |

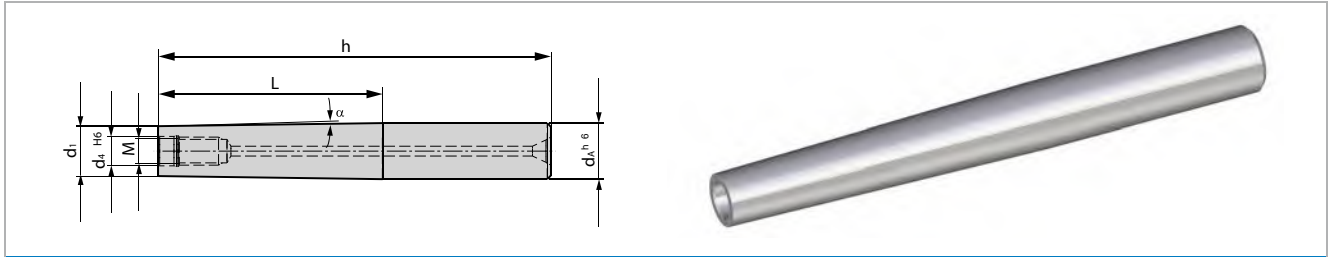


| M | d_4^{H6} | d_1 | d_A^{h6} | α | L | h | L_3 | Bestellbezeichnung Ordering code | Material-Nr. Material-No. | Verfügbarkeit Availability |
|---|------------|-------|------------|----------|----|-----|-------|-------------------------------------|------------------------------|-------------------------------|
| 6 | 6,5 | 9,5 | 10 | 0,72° | 20 | 60 | 9 | Z 10.060 M6 | 5127650 | ● |
| 6 | 6,5 | 9,5 | 10 | 0,36° | 40 | 80 | 9 | Z 10.080 M6 | 5127652 | ● |
| 6 | 6,5 | 9,5 | 10 | 0,24° | 60 | 100 | 9 | Z 10.100 M6 | 5127653 | ● |
| 6 | 6,5 | 9,5 | 10 | 0,18° | 80 | 120 | 9 | Z 10.120 M6 | 5127655 | ● |

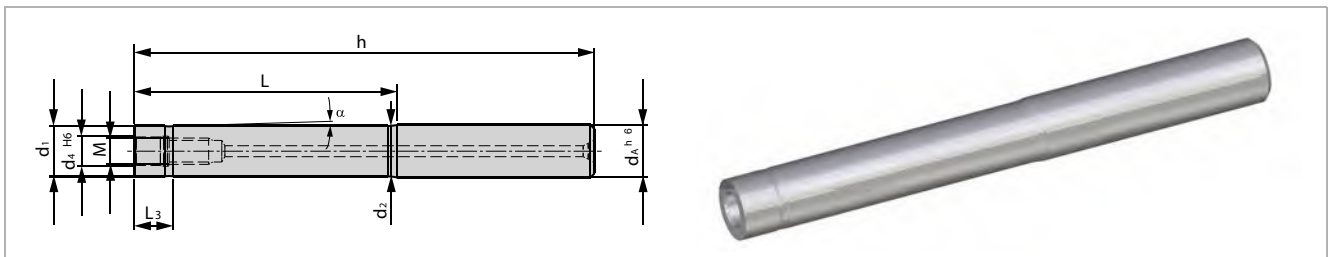


| M | d_4^{H6} | d_1 | d_A^{h6} | α | L | h | Bestellbezeichnung Ordering code | Material-Nr. Material-No. | Verfügbarkeit Availability |
|---|------------|-------|------------|----------|-----|-----|-------------------------------------|------------------------------|-------------------------------|
| 8 | 8,5 | 12,8 | 16 | 2,29° | 40 | 95 | K 16.040 M8 | 5087764 | ● |
| 8 | 8,5 | 12,8 | 16 | 1,53° | 60 | 115 | K 16.060 M8 | 5088441 | ● |
| 8 | 8,5 | 12,8 | 16 | 1,15° | 80 | 135 | K 16.080 M8 | 5088442 | ● |
| 8 | 8,5 | 12,8 | 16 | 0,92° | 100 | 155 | K 16.100 M8 | 5088459 | ● |
| 8 | 8,5 | 12,8 | 16 | 0,76° | 120 | 175 | K 16.120 M8 | 5088462 | ● |

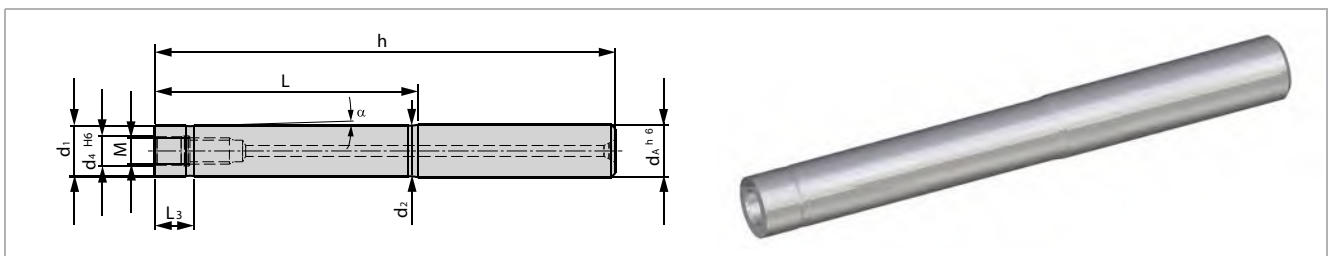
Bestellbeispiel Order example : 1 Stück piece 5153592 oder or Z 10.020 M4,5



| M | d ₄ ^{H6} | d ₁ | d _A ^{h6} | α | L | h | Bestellbezeichnung Ordering code | Material-Nr. Material-No. | Verfügbarkeit Availability |
|----|------------------------------|----------------|------------------------------|-------|-----|-----|-------------------------------------|------------------------------|-------------------------------|
| 10 | 10,5 | 17,8 | 20 | 1,58° | 40 | 100 | K 20.040 M10 | 5088552 | ● |
| 10 | 10,5 | 17,8 | 20 | 1,05° | 60 | 120 | K 20.060 M10 | 5088553 | ● |
| 10 | 10,5 | 17,8 | 20 | 0,79° | 80 | 140 | K 20.080 M10 | 5088661 | ● |
| 10 | 10,5 | 17,8 | 20 | 0,63° | 100 | 160 | K 20.100 M10 | 5088662 | ● |
| 10 | 10,5 | 17,8 | 20 | 0,53° | 120 | 180 | K 20.120 M10 | 5088768 | ● |



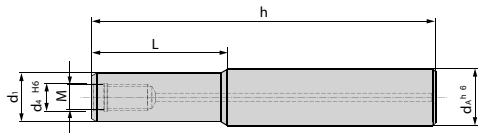
| M | d ₄ ^{H6} | d ₁ | d ₂ | d _A ^{h6} | α | L | h | L ₃ | Bestellbezeichnung Ordering code | Material-Nr. Material-No. | Verfügbarkeit Availability |
|----|------------------------------|----------------|----------------|------------------------------|--------|-----|-----|----------------|-------------------------------------|------------------------------|-------------------------------|
| 12 | 12,5 | 23 | 24,3 | 25 | 0,591° | 80 | 136 | 9 | K 25.080 M12 | 5088769 | ● |
| 12 | 12,5 | 23 | 24,3 | 25 | 0,449° | 100 | 156 | 9 | K 25.100 M12 | 5088776 | ● |
| 12 | 12,5 | 23 | 24,3 | 25 | 0,362° | 120 | 176 | 9 | K 25.120 M12 | 5088777 | ● |
| 12 | 12,5 | 23 | 24,3 | 25 | 0,303° | 140 | 196 | 9 | K 25.140 M12 | 5088779 | ● |
| 12 | 12,5 | 23 | 24,3 | 25 | 0,260° | 160 | 216 | 9 | K 25.160 M12 | 5088781 | ● |



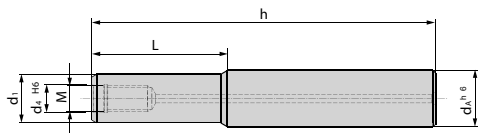
| M | d ₄ ^{H6} | d ₁ | d ₂ | d _A ^{h6} | α | L | h | L ₃ | Bestellbezeichnung Ordering code | Material-Nr. Material-No. | Verfügbarkeit Availability |
|----|------------------------------|----------------|----------------|------------------------------|--------|-----|-----|----------------|-------------------------------------|------------------------------|-------------------------------|
| 16 | 17 | 29 | 31,5 | 32 | 0,828° | 100 | 160 | 9 | K 32.100 M16 | 5088789 | ● |
| 16 | 17 | 29 | 31,5 | 32 | 0,517° | 150 | 210 | 9 | K 32.150 M16 | 5088788 | ● |
| 16 | 17 | 29 | 31,5 | 32 | 0,376° | 200 | 260 | 9 | K 32.200 M16 | 5088787 | ● |
| 16 | 17 | 29 | 31,5 | 32 | 0,295° | 250 | 310 | 9 | K 32.250 M16 | 5088786 | ● |
| 16 | 17 | 29 | 31,5 | 32 | 0,243° | 300 | 360 | 9 | K 32.300 M16 | 5088784 | ● |

Bestellbeispiel Order example : 1 Stück piece 5088552 oder or K 20.040 M10

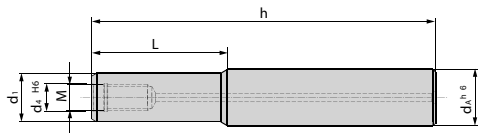
Vollhartmetall-Verlängerungen für Einschraubwerkzeug INCH
Solid carbide extensions for screw on type milling cutter INCH



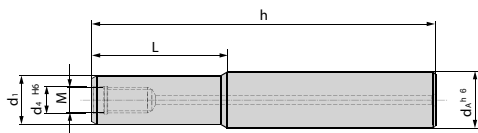
| Abmessungen [INCH] Dimensions [INCH] | | | | | | Material-Nr. Material-No. | Bestellbezeichnung Ordering code | Verfügbarkeit Availability |
|--------------------------------------|------------------------------|----------------|------------------------------|-------|-------|------------------------------|-------------------------------------|-------------------------------|
| M | d ₄ ^{H6} | d ₁ | d _A ^{h6} | L | h | | | |
| 6 | 0.256 | 0.374 | 0.375 | 1.496 | 4.330 | 5153910 | ZU 03750.1500 M06 | ○ |
| 6 | 0.256 | 0.374 | 0.375 | 2.086 | 5.512 | 5153911 | ZU 03750.2000 M06 | ○ |
| 6 | 0.256 | 0.433 | 0.500 | 1.457 | 4.803 | 5153912 | ZU 05000.1500 M06 | ○ |
| 6 | 0.256 | 0.433 | 0.500 | 2.047 | 6.378 | 5153914 | ZU 05000.2000 M06 | ○ |



| Abmessungen [INCH] Dimensions [INCH] | | | | | | Material-Nr. Material-No. | Bestellbezeichnung Ordering code | Verfügbarkeit Availability |
|--------------------------------------|------------------------------|----------------|------------------------------|-------|-------|------------------------------|-------------------------------------|-------------------------------|
| M | d ₄ ^{H6} | d ₁ | d _A ^{h6} | L | h | | | |
| 8 | 0.335 | 0.543 | 0.625 | 1.654 | 5.591 | 5153917 | ZU 06250.1600 M08 | ○ |
| 8 | 0.335 | 0.543 | 0.625 | 1.654 | 6.968 | 5153918 | ZU 06250.2200 M08 | ○ |



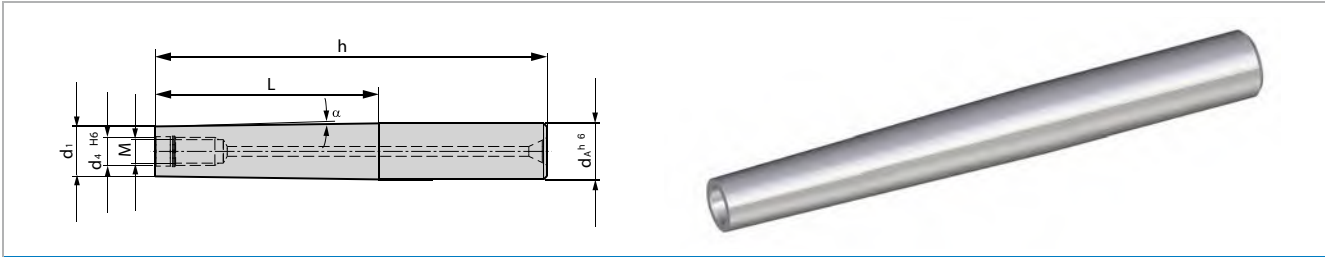
| Abmessungen [INCH] Dimensions [INCH] | | | | | | Material-Nr. Material-No. | Bestellbezeichnung Ordering code | Verfügbarkeit Availability |
|--------------------------------------|------------------------------|----------------|------------------------------|-------|-------|------------------------------|-------------------------------------|-------------------------------|
| M | d ₄ ^{H6} | d ₁ | d _A ^{h6} | L | h | | | |
| 10 | 0.413 | 0.7908 | 0.750 | 2.126 | 5.669 | 5153919 | ZU 07500.2100 M10 | ○ |
| 10 | 0.413 | 0.7908 | 0.750 | 3.071 | 7.637 | 5153947 | ZU 07500.3000 M10 | ○ |



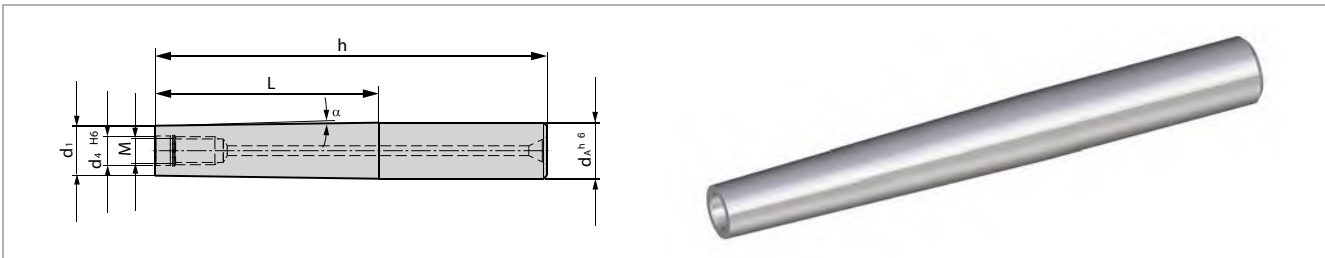
| Abmessungen [INCH] Dimensions [INCH] | | | | | | Material-Nr. Material-No. | Bestellbezeichnung Ordering code | Verfügbarkeit Availability |
|--------------------------------------|------------------------------|----------------|------------------------------|-------|-------|------------------------------|-------------------------------------|-------------------------------|
| M | d ₄ ^{H6} | d ₁ | d _A ^{h6} | L | h | | | |
| 12 | 0.492 | 0.890 | 1.000 | 2.362 | 6.299 | 5153951 | ZU 10000.2300 M12 | ○ |
| 12 | 0.492 | 0.890 | 1.000 | 3.543 | 8.267 | 5153966 | ZU 10000.3500 M12 | ○ |

Bestellbeispiel Order example : 1 Stück piece 5153910 oder or ZU 03750.1500 M06

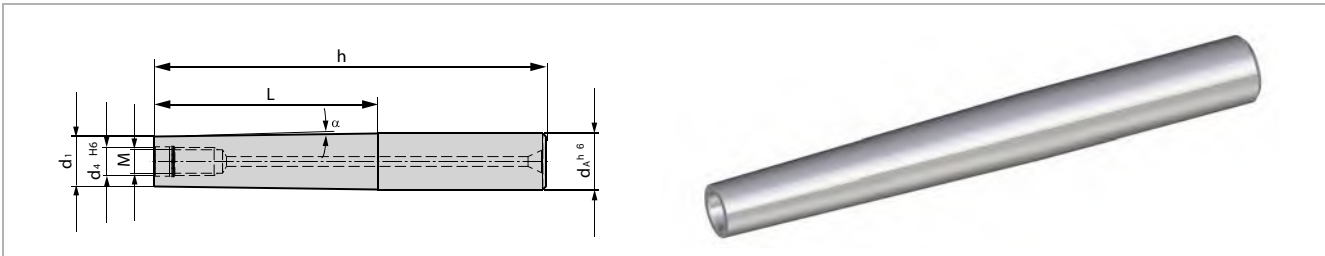
- Verfügbar ab Lager Available from stock
- Lieferzeit auf Anfrage Delivery time on request



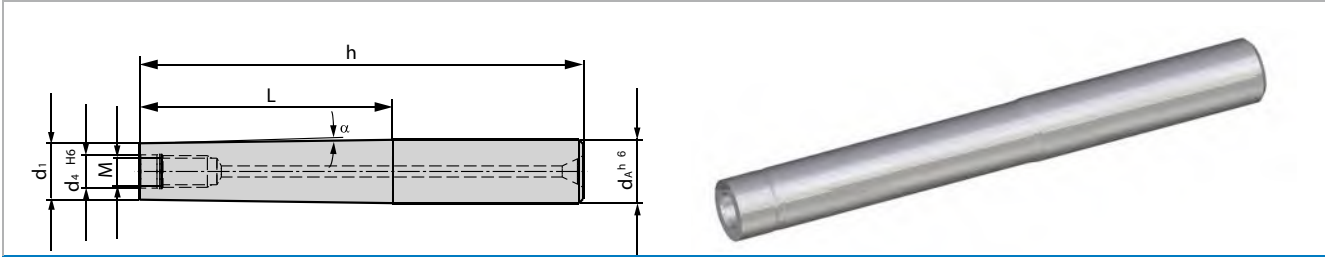
| Abmessungen [INCH] Dimensions [INCH] | | | | | | | Material-Nr. Material-No. | Bestellbezeichnung Ordering code | Verfügbarkeit Availability |
|--------------------------------------|------------------------------|----------------|------------------------------|------|-------|-------|------------------------------|-------------------------------------|-------------------------------|
| M | d ₄ ^{H6} | d ₁ | d _A ^{H6} | α | L | h | | | |
| 6 | 0.256 | 0.374 | 0.500 | 1.0° | 3.031 | 4.921 | 5153967 | KU 05000.3000 M06 | ○ |
| 6 | 0.256 | 0.374 | 0.500 | 0.4° | 5.000 | 6.889 | 5153969 | KU 05000.5000 M06 | ○ |



| Abmessungen [INCH] Dimensions [INCH] | | | | | | | Material-Nr. Material-No. | Bestellbezeichnung Ordering code | Verfügbarkeit Availability |
|--------------------------------------|------------------------------|----------------|------------------------------|------|-------|-------|------------------------------|-------------------------------------|-------------------------------|
| M | d ₄ ^{H6} | d ₁ | d _A ^{H6} | α | L | h | | | |
| 8 | 0.334 | 0.492 | 0.625 | 0.8° | 3.937 | 5.905 | 5153970 | KU 06250.4000 M08 | ○ |
| 8 | 0.334 | 0.492 | 0.625 | 0.6° | 4.921 | 6.889 | 5153971 | KU 06250.5000 M08 | ○ |



| Abmessungen [INCH] Dimensions [INCH] | | | | | | | Material-Nr. Material-No. | Bestellbezeichnung Ordering code | Verfügbarkeit Availability |
|--------------------------------------|------------------------------|----------------|------------------------------|-------|-------|-------|------------------------------|-------------------------------------|-------------------------------|
| M | d ₄ ^{H6} | d ₁ | d _A ^{H6} | α | L | h | | | |
| 10 | 0.413 | 0.669 | 0.750 | 0.35° | 3.700 | 5.905 | 5153976 | KU 07500.3700 M10 | ○ |
| 10 | 0.413 | 0.669 | 0.750 | 0.35° | 5.669 | 7.874 | 5153978 | KU 07500.5600 M10 | ○ |



| Abmessungen [INCH] Dimensions [INCH] | | | | | | | Material-Nr. Material-No. | Bestellbezeichnung Ordering code | Verfügbarkeit Availability |
|--------------------------------------|------------------------------|----------------|------------------------------|------|-------|-------|------------------------------|-------------------------------------|-------------------------------|
| M | d ₄ ^{H6} | d ₁ | d _A ^{H6} | α | L | h | | | |
| 12 | 0.492 | 0.787 | 1.000 | 1.2° | 4.094 | 6.299 | 5153979 | KU 10000.4000 M12 | ○ |
| 12 | 0.492 | 0.787 | 1.000 | 1.0° | 6.063 | 8.267 | 5153980 | KU 10000.6000 M12 | ○ |

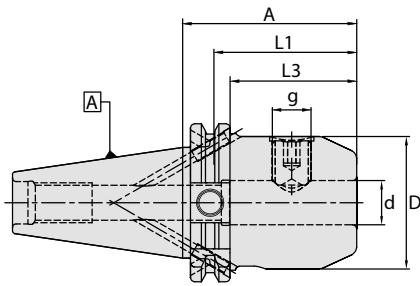
Bestellbeispiel Order example : 1 Stück piece 5153967 oder or KU 05000.3000 M06

- Verfügbar ab Lager Available from stock
- Lieferzeit auf Anfrage Delivery time on request

SK - Aufnahmen Chucks

Fräseraufnahme (Weldon) - für Zylinderschäfte (BE Typen) gemäß DIN 1835B

End mill holder (Weldon) - for cylindrical shanks (BE Typs) according to DIN 1835B



| d (mm) | D (mm) | A (mm) | L1 (mm) | L3 (mm) | g | Kühlmitteleinzufuhr Coolant supply | N/W (Kg) | Bezeichnung Designation | Ident No. | Verfügbarkeit Availability |
|--------|--------|--------|---------|---------|-----|---------------------------------------|----------|----------------------------|-----------|-------------------------------|
| 16 | 48 | 35 | 49 | 15.9 | M14 | Form "AD" | 1.0 | WSLH/16-35/SK40* | 4600771 | ● |
| 20 | 50 | 35 | 51 | 15.9 | M16 | Form "AD" | 1.0 | WSLH/20-35/SK40* | 4600782 | ● |
| 25 | 50 | 35 | 59 | 15.9 | M16 | Form "AD" | 1.0 | WSLH/25-35/SK40* | 4600788 | ● |
| 32 | 50 | 65 | 63 | 45.9 | M16 | Form "AD" | 1.2 | WSLH/32-65/SK40* | 4600792 | ● |
| 06 | 25 | 50 | 37 | 30.9 | M6 | Form "AD/B" | 1.0 | WSLH/06-50/SK40 | 4600745 | ○ |
| 08 | 28 | 50 | 37 | 30.9 | M8 | Form "AD/B" | 1.0 | WSLH/08-50/SK40 | 4600750 | ○ |
| 10 | 35 | 50 | 41 | 30.9 | M10 | Form "AD/B" | 1.1 | WSLH/10-50/SK40 | 4600755 | ○ |
| 12 | 42 | 50 | 46 | 30.9 | M12 | Form "AD/B" | 1.2 | WSLH/12-50/SK40 | 4600760 | ○ |
| 14 | 44 | 50 | 46 | 30.9 | M12 | Form "AD/B" | 1.2 | WSLH/14-50/SK40 | 4600765 | ○ |
| 16 | 48 | 63 | 49 | 43.9 | M14 | Form "AD/B" | 1.2 | WSLH/16-63/SK40 | 4600770 | ○ |
| 18 | 50 | 63 | 49 | 43.9 | M14 | Form "AD/B" | 1.4 | WSLH/18-63/SK40 | 4600776 | ○ |
| 20 | 50 | 63 | 51 | 43.9 | M16 | Form "AD/B" | 1.5 | WSLH/20-63/SK40 | 4600781 | ○ |
| 06 | 25 | 100 | 37 | 80.9 | M6 | Form "AD/B" | 1.2 | WSLH/06-100/SK40 | 4600746 | ○ |
| 08 | 28 | 100 | 37 | 80.9 | M8 | Form "AD/B" | 1.2 | WSLH/08-100/SK40 | 4600751 | ○ |
| 10 | 35 | 100 | 41 | 80.9 | M10 | Form "AD/B" | 1.4 | WSLH/10-100/SK40 | 4600756 | ○ |
| 12 | 42 | 100 | 46 | 80.9 | M12 | Form "AD/B" | 1.6 | WSLH/12-100/SK40 | 4600761 | ○ |
| 14 | 44 | 100 | 46 | 80.9 | M12 | Form "AD/B" | 1.7 | WSLH/14-100/SK40 | 4600766 | ○ |
| 16 | 48 | 100 | 49 | 80.9 | M14 | Form "AD/B" | 1.7 | WSLH/16-100/SK40 | 4600772 | ○ |
| 18 | 50 | 100 | 49 | 80.9 | M14 | Form "AD/B" | 2.0 | WSLH/18-100/SK40 | 4600777 | ○ |
| 20 | 52 | 100 | 51 | 80.9 | M16 | Form "AD/B" | 2.0 | WSLH/20-100/SK40 | 4600783 | ○ |
| 25 | 65 | 100 | 59 | 80.9 | M18 | Form "AD/B" | 2.7 | WSLH/25-100/SK40 ** | 4600787 | ○ |
| 32 | 72 | 100 | 63 | 80.9 | M20 | Form "AD/B" | 2.5 | WSLH/32-100/SK40 ** | 4600791 | ○ |
| 40 | 80 | 120 | 73 | 100.9 | M20 | Form "AD/B" | 3.0 | WSLH/40-120/SK40 ** | 4600795 | ○ |
| 06 | 25 | 160 | 37 | 140.9 | M6 | Form "AD/B" | 1.5 | WSLH/06-160/SK40 | 4600748 | ○ |
| 08 | 28 | 160 | 37 | 140.9 | M8 | Form "AD/B" | 1.5 | WSLH/08-160/SK40 | 4600753 | ○ |
| 10 | 35 | 160 | 41 | 140.9 | M10 | Form "AD/B" | 1.7 | WSLH/10-160/SK40 | 4600758 | ○ |
| 12 | 42 | 160 | 46 | 140.9 | M12 | Form "AD/B" | 2.2 | WSLH/12-160/SK40 | 4600763 | ○ |
| 14 | 44 | 160 | 46 | 140.9 | M12 | Form "AD/B" | 2.3 | WSLH/14-160/SK40 | 4600768 | ○ |
| 16 | 48 | 160 | 49 | 140.9 | M14 | Form "AD/B" | 1.7 | WSLH/16-160/SK40 | 4600774 | ○ |
| 18 | 50 | 160 | 49 | 140.9 | M14 | Form "AD/B" | 2.6 | WSLH/18-160/SK40 | 4600779 | ○ |
| 20 | 52 | 160 | 51 | 140.9 | M16 | Form "AD/B" | 2.8 | WSLH/20-160/SK40 | 4600785 | ○ |
| 25 | 65 | 160 | 59 | 140.9 | M18 | Form "AD/B" | 3.8 | WSLH/25-160/SK40 ** | 4600789 | ○ |
| 32 | 72 | 160 | 63 | 140.9 | M20 | Form "AD/B" | 4.4 | WSLH/32-160/SK40 ** | 4600793 | ○ |

Ersatzteile und Zubehör / Spare Parts & Accessories: Pg.D6 Pg.E2

| | |
|--|---|
| <ul style="list-style-type: none"> • Datenträger-Bohrung (10mm) Standard bei allen Grundhaltern • Bohrungstoleranz H4 * Extra kurze Aufnahmen: <ul style="list-style-type: none"> • Die Spannschrauben sind im Mitnehmer • Maximale Steifigkeit dank kurzer Auskragslänge • Im Lieferumfang enthalten: Spannschraube • Höhere Wuchtgüte auf Anfrage ** 2 Spannschrauben für ID Größe = 25 / 32 / 40 | <ul style="list-style-type: none"> • Data carrier bore (10mm) as standard for all holders • Bore tolerance H4 * Extra short holders: <ul style="list-style-type: none"> • Locking screws are located in the same plane as drive slots • Gives maximum rigidity due to short projection • Delivery includes: Locking screw • Higher balancing grade on request ** 2 locking screws for ID size = 25 / 32 / 40 |
|--|---|

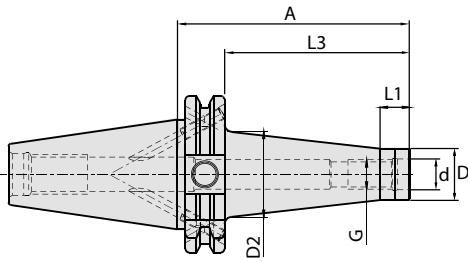
Das gesamte Aufnahmen Sortiment mit Ersatzteilen entnehmen Sie dem Bilz-Katalog
 CNC Grip / Thermo Grip www.bilz.de
 The complete chuck range also the spare parts refer to the Bilz- catalog
 CNC Grip / Thermo Grip www.bilz.de

● Verfügbar ab Lager Available from stock
 ○ kurzfristig lieferbar shortly available

SK - Aufnahmen Chucks

Aufnahmen für Einschraubfräser (BS Typen)

Chuck for screw on type (BS Typs)



| SK 40 | | | | | | | | | | | | | Verfügbarkeit Availability |
|-------|--------|---------|---------|--------|---------|---------|------------------------------------|----------------------------|-----------|---|--|--|-------------------------------|
| G | d (mm) | D1 (mm) | D2 (mm) | A (mm) | L1 (mm) | L3 (mm) | Kühlmittelzufuhr Coolant supply | Bezeichnung Designation | Ident No. | | | | |
| M6 | 6.5 | 10.0 | 13 | 44 | 12 | 24.9 | Form "AD/B" | WTA/M6-44/SK40 | 5054973 | ● | | | |
| M6 | 6.5 | 10.0 | 20 | 69 | 12 | 49.9 | Form "AD/B" | WTA/M6-69/SK40 | 5054974 | ● | | | |
| M6 | 6.5 | 10.0 | 23 | 94 | 12 | 74.9 | Form "AD/B" | WTA/M6-94/SK40 | 5054975 | ● | | | |
| M8 | 8.5 | 13.8 | 15 | 44 | 12 | 24.9 | Form "AD/B" | WTA/M8-44/SK40 | 5054979 | ● | | | |
| M8 | 8.5 | 13.8 | 23 | 69 | 12 | 49.9 | Form "AD/B" | WTA/M8-69/SK40 | 5054980 | ● | | | |
| M8 | 8.5 | 13.8 | 25 | 94 | 12 | 74.9 | Form "AD/B" | WTA/M8-94/SK40 | 5054981 | ● | | | |
| M8 | 8.5 | 13.8 | 30 | 119 | 12 | 99.9 | Form "AD/B" | WTA/M8-119/SK40 | 5054982 | ● | | | |
| M10 | 10.5 | 18.0 | 23 | 44 | 12 | 24.9 | Form "AD/B" | WTA/M10-44/SK40 | 5054983 | ● | | | |
| M10 | 10.5 | 18.0 | 25 | 69 | 12 | 49.9 | Form "AD/B" | WTA/M10-69/SK40 | 5054985 | ● | | | |
| M10 | 10.5 | 18.0 | 30 | 94 | 12 | 74.9 | Form "AD/B" | WTA/M10-94/SK40 | 5054989 | ● | | | |
| M10 | 10.5 | 18.0 | 35 | 119 | 12 | 99.9 | Form "AD/B" | WTA/M10-119/SK40 | 5054991 | ● | | | |
| M10 | 10.5 | 18.0 | 45 | 169 | 12 | 149.9 | Form "AD/B" | WTA/M10-169/SK40 | 5054992 | ● | | | |
| M12 | 12.5 | 21.0 | 24 | 44 | 12 | 24.9 | Form "AD/B" | WTA/M12-44/SK40 | 5054993 | ● | | | |
| M12 | 12.5 | 21.0 | 30 | 69 | 12 | 49.9 | Form "AD/B" | WTA/M12-69/SK40 | 5054995 | ● | | | |
| M12 | 12.5 | 21.0 | 35 | 94 | 12 | 74.9 | Form "AD/B" | WTA/M12-94/SK40 | 5054996 | ● | | | |
| M12 | 12.5 | 21.0 | 38 | 119 | 12 | 99.9 | Form "AD/B" | WTA/M12-119/SK40 | 5054997 | ● | | | |
| M12 | 12.5 | 21.0 | 48 | 169 | 12 | 149.9 | Form "AD/B" | WTA/M12-169/SK40 | 5054998 | ● | | | |
| M16 | 17.0 | 29.0 | 29 | 44 | 12 | 24.9 | Form "AD/B" | WTA/M16-44/SK40 | 5054999 | ● | | | |
| M16 | 17.0 | 29.0 | 34 | 69 | 12 | 49.9 | Form "AD/B" | WTA/M16-69/SK40 | 5055001 | ● | | | |
| M16 | 17.0 | 29.0 | 35 | 94 | 12 | 74.9 | Form "AD/B" | WTA/M16-94/SK40 | 5055002 | ● | | | |
| M16 | 17.0 | 29.0 | 40 | 119 | 12 | 99.9 | Form "AD/B" | WTA/M16-119/SK40 | 5055003 | ● | | | |
| M16 | 17.0 | 29.0 | 48 | 169 | 12 | 149.9 | Form "AD/B" | WTA/M16-169/SK40 | 5054004 | ● | | | |

| SK 50 | | | | | | | | | | | | | Verfügbarkeit Availability |
|-------|--------|---------|---------|--------|---------|---------|------------------------------------|----------------------------|-----------|---|--|--|-------------------------------|
| G | d (mm) | D1 (mm) | D2 (mm) | A (mm) | L1 (mm) | L3 (mm) | Kühlmittelzufuhr Coolant supply | Bezeichnung Designation | Ident No. | | | | |
| M8 | 8.5 | 13.8 | 23 | 69 | 12 | 49.9 | Form "AD/B" | WTA/M8-69/SK50 | 5055005 | ● | | | |
| M8 | 8.5 | 13.8 | 30 | 119 | 12 | 99.9 | Form "AD/B" | WTA/M8-119/SK50 | 5055007 | ● | | | |
| M8 | 8.5 | 13.8 | 45 | 169 | 12 | 149.9 | Form "AD/B" | WTA/M8-169/SK50 | 5055011 | ● | | | |
| M10 | 10.5 | 18.0 | 25 | 69 | 12 | 49.9 | Form "AD/B" | WTA/M10-69/SK50 | 5055012 | ● | | | |
| M10 | 10.5 | 18.0 | 35 | 119 | 12 | 99.9 | Form "AD/B" | WTA/M10-119/SK50 | 5055013 | ● | | | |
| M10 | 10.5 | 18.0 | 45 | 169 | 12 | 149.9 | Form "AD/B" | WTA/M10-169/SK50 | 5055014 | ● | | | |
| M12 | 12.5 | 21.0 | 30 | 69 | 12 | 49.9 | Form "AD/B" | WTA/M12-69/SK50 | 5055016 | ● | | | |
| M12 | 12.5 | 21.0 | 38 | 119 | 12 | 99.9 | Form "AD/B" | WTA/M12-119/SK50 | 5055017 | ● | | | |
| M12 | 12.5 | 21.0 | 52 | 169 | 12 | 149.9 | Form "AD/B" | WTA/M12-169/SK50 | 5055018 | ● | | | |
| M16 | 17.0 | 29.0 | 34 | 69 | 12 | 49.9 | Form "AD/B" | WTA/M16-69/SK50 | 5055019 | ● | | | |
| M16 | 17.0 | 29.0 | 40 | 119 | 12 | 99.9 | Form "AD/B" | WTA/M16-119/SK50 | 5055022 | ● | | | |
| M16 | 17.0 | 29.0 | 48 | 169 | 12 | 149.9 | Form "AD/B" | WTA/M16-169/SK50 | 5055023 | ● | | | |

Ersatzteile und Zubehör / Spare Parts & Accessories: Pg.D6

Siehe Seite D12 für Einschraubfräser Verlängerung & Reduzierung
Refer page. D12 for Threaded Arbor extensions & reductions.

Das gesamte Aufnahmen Sortiment mit Ersatzteilen entnehmen Sie dem Bilz-Katalog
CNC Grip / Thermo Grip www.bilz.de
The complete chuck range also the spare parts refer to the Bilz- catalog
CNC Grip / Thermo Grip www.bilz.de

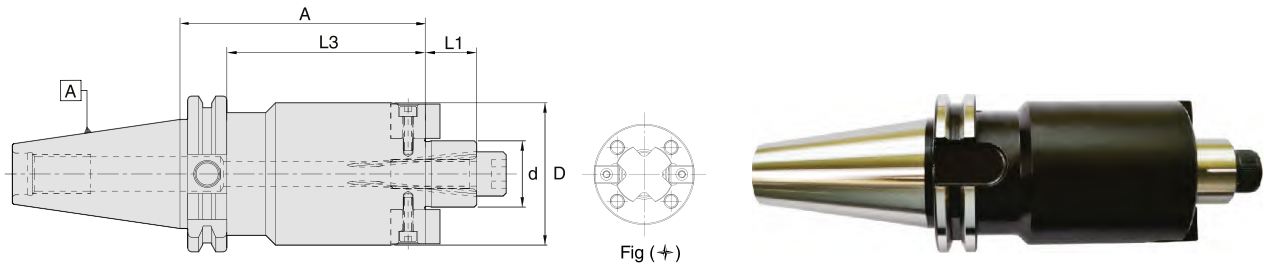
● Verfügbar ab Lager Available from stock
○ kurzfristig lieferbar shortly available

SK - Aufnahmen Chucks

Aufnahmedorn mit Innenzentrierung DIN 6357 mit vergrößertem

Bunddurchmesser für Aufsteckfräser (BF Typen)

Shell mill holder DIN 6357 for cutters with drive key face mill type cutter (BF Typs)



| SK 40 | | | | | | | | | | | | Verfügbarkeit Availability |
|--------|--------|--------|---------|---------|-------------------------------------|----------|----------------------------|-----------|---|--|--|-------------------------------|
| d (mm) | D (mm) | A (mm) | L1 (mm) | L3 (mm) | Kühlmittelezufuhr Coolant supply | N/W (Kg) | Bezeichnung Designation | Ident No. | | | | |
| 16 | 38 | 35 | 17 | 15.9 | Form "AD/B" | 1.0 | WSMH/16-35/SK40 | 4600822 | ● | | | |
| 22 | 48 | 35 | 19 | 15.9 | Form "AD/B" | 1.0 | WSMH/22-35/SK40 | 4600823 | ● | | | |
| 27 | 50 | 40 | 21 | 20.9 | Form "AD/B" | 1.1 | WSMH/27-40/SK40 | 4600824 | ● | | | |
| 32 | 78 | 50 | 24 | 30.9 | Form "AD/B" | 1.3 | WSMH/32-50/SK40 | 4600825 | ● | | | |
| 40 | 88 | 50 | 27 | 30.9 | Form "AD/B" | 1.6 | WSMH/40-50/SK40+* | 4600826 | ● | | | |
| 16 | 38 | 100 | 17 | 80.9 | Form "AD/B" | 1.8 | WSMH/16-100/SK40 | 5055095 | ○ | | | |
| 22 | 48 | 100 | 19 | 80.9 | Form "AD/B" | 2.1 | WSMH/22-100/SK40 | 5055102 | ○ | | | |
| 27 | 58 | 100 | 21 | 80.9 | Form "AD/B" | 2.6 | WSMH/27-100/SK40 | 5055104 | ○ | | | |
| 32 | 78 | 100 | 24 | 80.9 | Form "AD/B" | 3.6 | WSMH/32-100/SK40 | 5055105 | ○ | | | |
| 40 | 88 | 100 | 27 | 80.9 | Form "AD/B" | 4.3 | WSMH/40-100/SK40+* | 5055106 | ○ | | | |
| 16 | 38 | 160 | 17 | 140.9 | Form "AD/B" | 2.1 | WSMH/16-160/SK40 | 5055107 | ○ | | | |
| 22 | 48 | 160 | 19 | 140.9 | Form "AD/B" | 2.7 | WSMH/22-160/SK40 | 5055108 | ○ | | | |
| 27 | 58 | 160 | 21 | 140.9 | Form "AD/B" | 3.7 | WSMH/27-160/SK40 | 5055109 | ○ | | | |
| 32 | 78 | 160 | 24 | 140.9 | Form "AD/B" | 5.8 | WSMH/32-160/SK40 | 5055110 | ○ | | | |
| 40 | 88 | 160 | 27 | 140.9 | Form "AD/B" | 6.6 | WSMH/40-160/SK40+* | 5055111 | ○ | | | |

| SK 50 | | | | | | | | | | | | Verfügbarkeit Availability |
|--------|--------|--------|---------|---------|-------------------------------------|----------|----------------------------|-----------|---|--|--|-------------------------------|
| d (mm) | D (mm) | A (mm) | L1 (mm) | L3 (mm) | Kühlmittelezufuhr Coolant supply | N/W (Kg) | Bezeichnung Designation | Ident No. | | | | |
| 16 | 38 | 44 | 17 | 24.9 | Form "AD/B" | 2.8 | WSMH/16-44/SK50 | 5055112 | ○ | | | |
| 22 | 48 | 44 | 19 | 24.9 | Form "AD/B" | 3.0 | WSMH/22-44/SK50 | 4601356 | ○ | | | |
| 27 | 58 | 44 | 21 | 24.9 | Form "AD/B" | 3.2 | WSMH/27-44/SK50 | 4601357 | ○ | | | |
| 32 | 78 | 40 | 24 | 20.9 | Form "AD/B" | 4.0 | WSMH/32-40/SK50 | 4601358 | ○ | | | |
| 40 | 88 | 50 | 27 | 30.9 | Form "AD/B" | 4.2 | WSMH/40-50/SK50+* | 4601359 | ○ | | | |
| 60 | 129 | 70 | 40 | 50.9 | - | 4.8 | WSMH/60-70/SK50+ | 4601360 | ○ | | | |
| 16 | 38 | 100 | 17 | 80.9 | Form "AD/B" | 3.6 | WSMH/16-100/SK50 | 5055123 | ○ | | | |
| 22 | 48 | 100 | 19 | 80.9 | Form "AD/B" | 4.0 | WSMH/22-100/SK50 | 5055125 | ○ | | | |
| 27 | 58 | 100 | 21 | 80.9 | Form "AD/B" | 4.4 | WSMH/27-100/SK50 | 5055126 | ○ | | | |
| 32 | 78 | 100 | 24 | 80.9 | Form "AD/B" | 5.2 | WSMH/32-100/SK50 | 5055127 | ○ | | | |
| 40 | 88 | 100 | 27 | 80.9 | Form "AD/B" | 6.0 | WSMH/40-100/SK50+* | 5055128 | ○ | | | |
| 16 | 38 | 160 | 17 | 140.9 | Form "AD/B" | 3.9 | WSMH/16-160/SK50 | 5055130 | ○ | | | |
| 22 | 48 | 160 | 19 | 140.9 | Form "AD/B" | 4.2 | WSMH/22-160/SK50 | 5055131 | ○ | | | |
| 27 | 58 | 160 | 21 | 140.9 | Form "AD/B" | 5.3 | WSMH/27-160/SK50 | 5055132 | ○ | | | |
| 32 | 78 | 160 | 24 | 140.9 | Form "AD/B" | 7.2 | WSMH/32-160/SK50 | 5055133 | ○ | | | |
| 40 | 88 | 160 | 27 | 140.9 | Form "AD/B" | 8.8 | WSMH/40-160/SK50+* | 5055134 | ○ | | | |

Ersatzteile und Zubehör / Spare Parts & Accessories: Pg.D8 Pg.E3 Pg.E4 Pg.D6 Pg.E4

- Datenträger-Bohrung (10 mm) Standard bei allen Grundhaltern
 - Kühlbohrung an der Stirnseite Standard bei allen Grundhaltern
 - + ID = Ø 40, D = Ø 60 Mit 4 zusätzlichen Gewindebohrungen nach DIN 2079
 - Im Lieferumfang enthalten: Mitnehmersteine, Fräseranzugsschraube und Spannschrauben (DIN 912)
 - Spannschrauben bitte separat bestellen (DIN6367)
 - * Im Lieferumfang enthalten: Spannschrauben (DIN 912 & DIN 6367)
- Data carrier bore (10 mm) as standard for all holders
 - Coolant bore on the pilot face (holder with Form "AD/B") as standard for all holders
 - + ID = Ø 40, d = Ø 60 with additional 4 screw holes to DIN 2079
 - Delivery includes: Drive keys, clamping screw and locking screw (DIN 912)
 - Please order locking screw (DIN 6367) separately
 - * Delivery includes: Locking screw (both DIN 912 & DIN 6367)

Das gesamte Aufnahmen Sortiment mit Ersatzteilen entnehmen Sie dem Bilz-Katalog

CNC Grip / Thermo Grip www.bilz.de

The complete chuck range also the spare parts refer to the Bilz- catalog

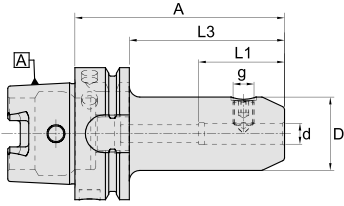
CNC Grip / Thermo Grip www.bilz.de

● Verfügbar ab Lager Available from stock
○ kurzfristig lieferbar shortly available

HSK - Aufnahmen Chucks

Fräseraufnahmen (Weldon) - für Zylinderschäfte gemäß DIN 1835B (BE Typen)

End mill holder (Weldon) - for cylindrical shanks according to DIN 1835B (BE Typs)



| HSK-A63 | | | | | | | | | | ≤ 3µm | G2.5 15000 RPM | bar | Verfügbar- keit Availability |
|-----------|-----------|-----------|------------|------------|--------|------------------------------------|-------------|----------------------------|-----------|-------|----------------------|-----|------------------------------------|
| d (mm) | D (mm) | A (mm) | L1 (mm) | L3 (mm) | g | Kühlmittelzufuhr Coolant supply | N/W (Kg) | Bezeichnung Designation | Ident No. | | | | |
| 06 | 25 | 65 | 37 | 39 | M6 | Form "AD" | 1.0 | WSLH/06-65/HSK-A63 | 4601702 | ○ | | | |
| 08 | 28 | 65 | 37 | 39 | M8 | Form "AD" | 1.0 | WSLH/08-65/HSK-A63 | 4601705 | ○ | | | |
| 10 | 35 | 65 | 41 | 39 | M10 | Form "AD" | 1.0 | WSLH/10-65/HSK-A63 | 4601708 | ○ | | | |
| 12 | 42 | 80 | 46 | 54 | M12 | Form "AD" | 1.4 | WSLH/12-80/HSK-A63 | 4601711 | ○ | | | |
| 14 | 44 | 80 | 46 | 54 | M12 | Form "AD" | 1.4 | WSLH/14-80/HSK-A63 | 4601715 | ○ | | | |
| 16 | 48 | 80 | 49 | 54 | M14 | Form "AD" | 1.4 | WSLH/16-80/HSK-A63 | 4601719 | ○ | | | |
| 18 | 50 | 80 | 49 | 54 | M14 | Form "AD" | 1.7 | WSLH/18-80/HSK-A63 | 4601723 | ○ | | | |
| 20 | 52 | 80 | 51 | 54 | M16 | Form "AD" | 1.7 | WSLH/20-80/HSK-A63 | 4601727 | ● | | | |
| 06 | 25 | 100 | 37 | 74 | M6 | Form "AD" | 1.2 | WSLH/06-100/HSK-A63 | 4601703 | ○ | | | |
| 08 | 28 | 100 | 37 | 74 | M8 | Form "AD" | 1.2 | WSLH/08-100/HSK-A63 | 4601706 | ○ | | | |
| 10 | 35 | 100 | 41 | 74 | M10 | Form "AD" | 1.2 | WSLH/10-100/HSK-A63 | 4601709 | ○ | | | |
| 12 | 42 | 100 | 46 | 74 | M12 | Form "AD" | 1.5 | WSLH/12-100/HSK-A63 | 5056629 | ○ | | | |
| 16 | 48 | 100 | 49 | 74 | M14 | Form "AD" | 1.7 | WSLH/16-100/HSK-A63 | 5056632 | ○ | | | |
| 20 | 52 | 100 | 51 | 74 | M16 | Form "AD" | 1.9 | WSLH/20-100/HSK-A63 | 5056495 | ○ | | | |
| 25 | 62.5 | 110 | 59 | 84 | M18 x2 | Form "AD" | 2.5 | WSLH/25-110/HSK-A63 ** | 4601730 | ● | | | |
| 32 | 72 | 110 | 63 | 84 | M20 x2 | Form "AD" | 2.5 | WSLH/32-110/HSK-A63 ** | 4601732 | ● | | | |
| 40 | 80 | 125 | 73 | 99 | M20 x2 | Form "AD" | 3.2 | WSLH/40-125/HSK-A63 ** | 4601734 | ○ | | | |

| HSK-A63 | | | | | | | | | | ≤ 3µm | G6.3 15000 RPM | bar | Verfügbar- keit Availability |
|-----------|-----------|-----------|------------|------------|-----|------------------------------------|-------------|----------------------------|-----------|-------|----------------------|-----|------------------------------------|
| d (mm) | D (mm) | A (mm) | L1 (mm) | L3 (mm) | g | Kühlmittelzufuhr Coolant supply | N/W (Kg) | Bezeichnung Designation | Ident No. | | | | |
| 06 | 25 | 160 | 37 | 134 | M6 | Form "AD" | 1.4 | WSLH/06-160/HSK-A63 | 5056636 | ○ | | | |
| 08 | 28 | 160 | 37 | 134 | M8 | Form "AD" | 1.5 | WSLH/08-160/HSK-A63 | 5056638 | ○ | | | |
| 10 | 35 | 160 | 41 | 134 | M10 | Form "AD" | 1.8 | WSLH/10-160/HSK-A63 | 5056640 | ○ | | | |
| 12 | 42 | 160 | 46 | 134 | M12 | Form "AD" | 1.8 | WSLH/12-160/HSK-A63 | 5056642 | ○ | | | |
| 16 | 48 | 160 | 49 | 134 | M14 | Form "AD" | 1.8 | WSLH/16-160/HSK-A63 | 5056643 | ○ | | | |
| 20 | 52 | 160 | 51 | 134 | M16 | Form "AD" | 1.7 | WSLH/20-160/HSK-A63 | 5056645 | ○ | | | |

| HSK-A100 | | | | | | | | | | ≤ 3µm | G6.3 15000 RPM | bar | Verfügbar- keit Availability |
|-----------|-----------|-----------|------------|------------|--------|------------------------------------|-------------|----------------------------|-----------|-------|----------------------|-----|------------------------------------|
| d (mm) | D (mm) | A (mm) | L1 (mm) | L3 (mm) | g | Kühlmittelzufuhr Coolant supply | N/W (Kg) | Bezeichnung Designation | Ident No. | | | | |
| 06 | 25 | 80 | 37 | 51 | M6 | Form "AD" | 2.5 | WSLH/06-80/HSK-A100 | 4601614 | ○ | | | |
| 08 | 28 | 80 | 37 | 51 | M8 | Form "AD" | 2.4 | WSLH/08-80/HSK-A100 | 4601616 | ○ | | | |
| 10 | 35 | 80 | 41 | 51 | M10 | Form "AD" | 2.5 | WSLH/10-80/HSK-A100 | 4601618 | ○ | | | |
| 12 | 42 | 80 | 46 | 51 | M12 | Form "AD" | 2.7 | WSLH/12-80/HSK-A100 | 4601620 | ○ | | | |
| 14 | 44 | 80 | 46 | 51 | M12 | Form "AD" | 2.7 | WSLH/14-80/HSK-A100 | 4601622 | ○ | | | |
| 16 | 48 | 100 | 49 | 71 | M14 | Form "AD" | 2.8 | WSLH/16-100/HSK-A100 | 4601624 | ● | | | |
| 18 | 50 | 100 | 49 | 71 | M14 | Form "AD" | 2.9 | WSLH/18-100/HSK-A100 | 4601626 | ○ | | | |
| 20 | 52 | 100 | 51 | 71 | M16 | Form "AD" | 3.2 | WSLH/20-100/HSK-A100 | 4601628 | ● | | | |
| 25 | 65 | 100 | 59 | 71 | M18 x2 | Form "AD" | 3.7 | WSLH/25-100/HSK-A100 ** | 4601630 | ● | | | |
| 32 | 72 | 100 | 63 | 71 | M20 x2 | Form "AD" | 4.0 | WSLH/32-100/HSK-A100 ** | 4601632 | ● | | | |
| 40 | 80 | 105 | 73 | 76 | M20 x2 | Form "AD" | 4.7 | WSLH/40-105/HSK-A100 ** | 4601634 | ○ | | | |

| HSK-A100 | | | | | | | | | | ≤ 3µm | G6.3 15000 RPM | bar | Verfügbar- keit Availability |
|-----------|-----------|-----------|------------|------------|--------|------------------------------------|-------------|----------------------------|-----------|-------|----------------------|-----|------------------------------------|
| d (mm) | D (mm) | A (mm) | L1 (mm) | L3 (mm) | g | Kühlmittelzufuhr Coolant supply | N/W (Kg) | Bezeichnung Designation | Ident No. | | | | |
| 06 | 25 | 160 | 37 | 131 | M6 | Form "AD" | 2.7 | WSLH/06-160/HSK-A100 | 5056735 | ○ | | | |
| 08 | 28 | 160 | 37 | 131 | M8 | Form "AD" | 2.9 | WSLH/08-160/HSK-A100 | 5056736 | ○ | | | |
| 10 | 35 | 160 | 41 | 131 | M10 | Form "AD" | 3.1 | WSLH/10-160/HSK-A100 | 5056737 | ○ | | | |
| 12 | 42 | 160 | 46 | 131 | M12 | Form "AD" | 3.6 | WSLH/12-160/HSK-A100 | 5056739 | ○ | | | |
| 16 | 48 | 160 | 49 | 131 | M14 | Form "AD" | 3.9 | WSLH/16-160/HSK-A100 | 5056740 | ○ | | | |
| 20 | 52 | 160 | 51 | 131 | M16 | Form "AD" | 4.4 | WSLH/20-160/HSK-A100 | 5056742 | ○ | | | |
| 25 | 65 | 160 | 59 | 131 | M18 x2 | Form "AD" | 5.3 | WSLH/25-160/HSK-A100 ** | 5056743 | ○ | | | |

Ersatzteile und Zubehör / Spare Parts & Accessories:



Pg.E2



Pg.D8

- Bohrungstoleranz H4
 - Kühlmittelrohr bitte separat bestellen (Siehe Seite D8)
 - Im Lieferumfang enthalten: Spannschraube
- ** 2 Spannschrauben für ID Größe = 25 / 32 / 40

- Bore tolerance H4
 - Please order coolant tube separately (See page D8)
 - Delivery includes: Locking screw
- ** 2 locking screws for ID size = 25 / 32 / 40

Das gesamte Aufnahmen Sortiment mit Ersatzteilen entnehmen Sie dem Bilz-Katalog

CNC Grip / Thermo Grip www.bilz.de

The complete chuck range also the spare parts refer to the Bilz- catalog

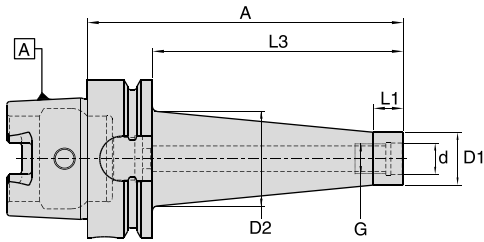
CNC Grip / Thermo Grip www.bilz.de

- Verfügbar ab Lager Available from stock
- kurzfristig lieferbar shortly available

HSK - Aufnahmen Chucks

Aufnahmen für Einschraubfräser (BS Typen)

Chuck for screw on type milling heads (BS Typs)



| HSK-A63 | | | | | | | | | | Verfügbarkeit Availability |
|---------|--------|---------|---------|--------|---------|---------|-------------------------------------|----------------------------|-----------|-------------------------------|
| G | d (mm) | D1 (mm) | D2 (mm) | A (mm) | L1 (mm) | L3 (mm) | Kühlmittelezufuhr Coolant supply | Bezeichnung Designation | Ident No. | |
| M8 | 8.5 | 13.8 | 15 | 51 | 12 | 25 | Form "AD" | WTA/M8-51/HSK-A63 | 5055783 | ● |
| M8 | 8.5 | 13.8 | 23 | 76 | 12 | 50 | Form "AD" | WTA/M8-76/HSK-A63 | 5055784 | ○ |
| M8 | 8.5 | 13.8 | 25 | 101 | 12 | 75 | Form "AD" | WTA/M8-101/HSK-A63 | 5055785 | ○ |
| M10 | 10.5 | 18.0 | 23 | 51 | 12 | 25 | Form "AD" | WTA/M10-51/HSK-A63 | 5055786 | ● |
| M10 | 10.5 | 18.0 | 25 | 76 | 12 | 50 | Form "AD" | WTA/M10-76/HSK-A63 | 5055787 | ○ |
| M10 | 10.5 | 18.0 | 35 | 126 | 12 | 100 | Form "AD" | WTA/M10-126/HSK-A63 | 5055788 | ○ |
| M10 | 10.5 | 18.0 | 45 | 176 | 12 | 150 | Form "AD" | WTA/M10-176/HSK-A63 | 5055789 | ○ |
| M12 | 12.5 | 21.0 | 24 | 51 | 12 | 25 | Form "AD" | WTA/M12-51/HSK-A63 | 5055790 | ● |
| M12 | 12.5 | 21.0 | 30 | 76 | 12 | 50 | Form "AD" | WTA/M12-76/HSK-A63 | 5055791 | ○ |
| M12 | 12.5 | 21.0 | 38 | 126 | 12 | 100 | Form "AD" | WTA/M12-126/HSK-A63 | 5055792 | ○ |
| M12 | 12.5 | 21.0 | 45 | 176 | 12 | 150 | Form "AD" | WTA/M12-176/HSK-A63 | 5055793 | ○ |
| M16 | 17.0 | 29.0 | 29 | 51 | 12 | 25 | Form "AD" | WTA/M16-51/HSK-A63 | 5055794 | ● |
| M16 | 17.0 | 29.0 | 34 | 76 | 12 | 50 | Form "AD" | WTA/M16-76/HSK-A63 | 5055795 | ○ |
| M16 | 17.0 | 29.0 | 40 | 126 | 12 | 100 | Form "AD" | WTA/M16-126/HSK-A63 | 5055796 | ○ |
| M16 | 17.0 | 29.0 | 48 | 176 | 12 | 150 | Form "AD" | WTA/M16-176/HSK-A63 | 5055797 | ○ |

| HSK-A100 | | | | | | | | | | Verfügbarkeit Availability |
|----------|--------|---------|---------|--------|---------|---------|-------------------------------------|----------------------------|-----------|-------------------------------|
| G | d (mm) | D1 (mm) | D2 (mm) | A (mm) | L1 (mm) | L3 (mm) | Kühlmittelezufuhr Coolant supply | Bezeichnung Designation | Ident No. | |
| M10 | 10.5 | 18.0 | 25 | 79 | 12 | 50 | Form "AD" | WTA/M10-79/HSK-A100 | 5055798 | ● |
| M10 | 10.5 | 18.0 | 35 | 129 | 12 | 100 | Form "AD" | WTA/M10-129/HSK-A100 | 5055799 | ○ |
| M10 | 10.5 | 18.0 | 45 | 179 | 12 | 150 | Form "AD" | WTA/M10-179/HSK-A100 | 5055800 | ○ |
| M12 | 12.5 | 21.0 | 30 | 79 | 12 | 50 | Form "AD" | WTA/M12-79/HSK-A100 | 5055801 | ● |
| M12 | 12.5 | 21.0 | 38 | 129 | 12 | 100 | Form "AD" | WTA/M12-129/HSK-A100 | 5055802 | ○ |
| M12 | 12.5 | 21.0 | 45 | 179 | 12 | 150 | Form "AD" | WTA/M12-179/HSK-A100 | 5055803 | ○ |
| M16 | 17.0 | 29.0 | 34 | 79 | 12 | 50 | Form "AD" | WTA/M16-79/HSK-A100 | 5055804 | ● |
| M16 | 17.0 | 29.0 | 40 | 129 | 12 | 100 | Form "AD" | WTA/M16-129/HSK-A100 | 5055805 | ○ |
| M16 | 17.0 | 29.0 | 48 | 179 | 12 | 150 | Form "AD" | WTA/M16-179/HSK-A100 | 5055806 | ○ |

Ersatzteile und Zubehör / Spare Parts & Accessories: Pg.D8

- Kühlmittelrohr bitte separat bestellen (Siehe Seite D8)
- Siehe Seite D12 für Einschraubfräser Verlängerung & Reduzierung
- Please order coolant tube separately (See page D8)
- Refer page D12 for Threaded Arbor extensions & reductions.

Das gesamte Aufnahmen Sortiment mit Ersatzteilen entnehmen Sie dem Bilz-Katalog
 CNC Grip / Thermo Grip www.bilz.de
 The complete chuck range also the spare parts refer to the Bilz- catalog
 CNC Grip / Thermo Grip www.bilz.de

- Verfügbar ab Lager Available from stock
- kurzfristig lieferbar shortly available

HSK - Aufnahmen Chucks

Aufnahmedorn mit Innenzentrierung DIN 6357 und vergrößertem Bunddurchmesser (BF Typen)

Shell mill holder DIN 6357 for cutters with drive key (BF Typs)

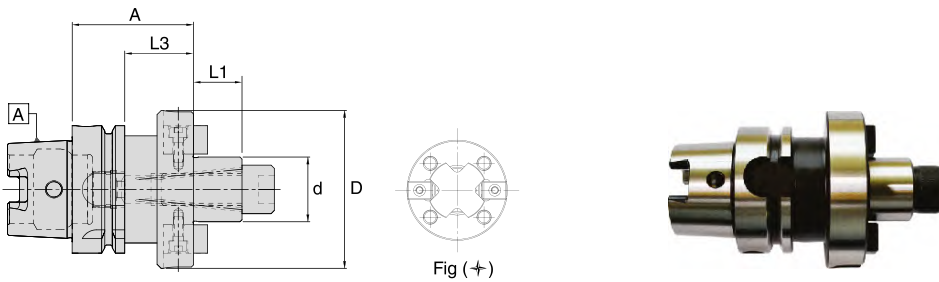


Fig (+)

| HSK-A50 | | | | | | | | | ≤ 5µm G2.5 15000 R.P.M. bar | Verfügbarkeit Availability |
|---------|--------|--------|---------|---------|-------------------------------------|----------|----------------------------|-----------|-----------------------------------|-------------------------------|
| d (mm) | D (mm) | A (mm) | L1 (mm) | L3 (mm) | Kühlmittelezufuhr Coolant supply | N/W (kg) | Bezeichnung Designation | Ident No. | | |
| 16 | 38 | 50 | 17 | 24 | Form "AD" | 0.8 | WSMH/16-50/HSK-A50 | 5103448 | ● | |
| 22 | 48 | 60 | 19 | 34 | Form "AD" | 1.0 | WSMH/22-60/HSK-A50 | 5103450 | ● | |
| 27 | 58 | 60 | 21 | 34 | Form "AD" | 1.1 | WSMH/27-60/HSK-A50 | 5103452 | ● | |
| 32 | 78 | 60 | 24 | 34 | Form "AD" | 1.4 | WSMH/32-60/HSK-A50 | 5103454 | ● | |
| 16 | 38 | 100 | 17 | 74 | Form "AD" | 1.2 | WSMH/16-100/HSK-A50 | 5103457 | ● | |
| 22 | 48 | 100 | 19 | 74 | Form "AD" | 1.6 | WSMH/22-100/HSK-A50 | 5103459 | ● | |
| 27 | 58 | 100 | 21 | 74 | Form "AD" | 1.9 | WSMH/27-100/HSK-A50 | 5103461 | ● | |
| 32 | 78 | 100 | 24 | 74 | Form "AD" | 2.7 | WSMH/32-100/HSK-A50 | 5103462 | ● | |

| HSK-A63 | | | | | | | | | ≤ 5µm G2.5 15000 R.P.M. bar | Verfügbarkeit Availability |
|---------|--------|--------|---------|---------|-------------------------------------|----------|----------------------------|-----------|-----------------------------------|-------------------------------|
| d (mm) | D (mm) | A (mm) | L1 (mm) | L3 (mm) | Kühlmittelezufuhr Coolant supply | N/W (kg) | Bezeichnung Designation | Ident No. | | |
| 16 | 38 | 50 | 17 | 24 | Form "AD" | 1.1 | WSMH/16-50/HSK-A63 | 4601763 | ● | |
| 22 | 48 | 50 | 19 | 24 | Form "AD" | 1.1 | WSMH/22-50/HSK-A63 | 4601765 | ● | |
| 27 | 58 | 60 | 21 | 34 | Form "AD" | 1.3 | WSMH/27-60/HSK-A63 | 4601767 | ● | |
| 32 | 78 | 60 | 24 | 34 | Form "AD" | 1.4 | WSMH/32-60/HSK-A63 | 4601769 | ● | |
| 40 | 88 | 60 | 27 | 34 | Form "AD" | 1.9 | WSMH/40-60/HSK-A63+* | 4601771 | ● | |
| 16 | 38 | 100 | 17 | 74 | Form "AD" | 1.4 | WSMH/16-100/HSK-A63 | 4601764 | ● | |
| 22 | 48 | 100 | 19 | 74 | Form "AD" | 1.8 | WSMH/22-100/HSK-A63 | 4601766 | ● | |
| 27 | 58 | 100 | 21 | 74 | Form "AD" | 2.0 | WSMH/27-100/HSK-A63 | 4601768 | ● | |
| 32 | 78 | 100 | 24 | 74 | Form "AD" | 2.6 | WSMH/32-100/HSK-A63 | 4601770 | ● | |
| 40 | 88 | 100 | 27 | 74 | Form "AD" | 3.1 | WSMH/40-100/HSK-A63+* | 4601772 | ● | |

| HSK-A100 | | | | | | | | | ≤ 5µm G2.5 15000 R.P.M. bar | Verfügbarkeit Availability |
|----------|--------|--------|---------|---------|-------------------------------------|----------|----------------------------|-----------|-----------------------------------|-------------------------------|
| d (mm) | D (mm) | A (mm) | L1 (mm) | L3 (mm) | Kühlmittelezufuhr Coolant supply | N/W (kg) | Bezeichnung Designation | Ident No. | | |
| 16 | 38 | 50 | 17 | 21 | Form "AD" | 2.3 | WSMH/16-50/HSK-A100 | 5056120 | ● | |
| 22 | 48 | 50 | 19 | 21 | Form "AD" | 2.5 | WSMH/22-50/HSK-A100 | 4601663 | ● | |
| 27 | 58 | 50 | 21 | 21 | Form "AD" | 2.7 | WSMH/27-50/HSK-A100 | 4601664 | ● | |
| 32 | 78 | 50 | 24 | 21 | Form "AD" | 2.8 | WSMH/32-50/HSK-A100 | 4601665 | ● | |
| 40 | 88 | 60 | 27 | 31 | Form "AD" | 3.8 | WSMH/40-60/HSK-A100+* | 4601666 | ● | |
| 60 | 129 | 70 | 40 | 41 | Form "AD" | 6.0 | WSMH/60-70/HSK-A100+ | 5056122 | ● | |

Ersatzteile und Zubehör / Spare Parts & Accessories: Pg.D8 Pg.E3 Pg.E4 Pg.E4 Pg.D8

- Kühlbohrung an der Stirnseite Standard bei allen Grundhaltern
- ✦ ID = Ø 40, D = Ø 60 Mit 4 zusätzlichen Gewindebohrungen nach DIN 2079
- Kühlmittelrohr bitte separat bestellen (Siehe Seite D8)
- Im Lieferumfang enthalten: Mitnehmersteine, Fräseranzugsschraube und Spannschrauben (DIN 912)
- * Im Lieferumfang enthalten: Spannschrauben (DIN 912 & DIN 6367)
- Spannschrauben (DIN6367) bitte separat bestellen (Siehe Seite E3)

- Coolant bore on the pilot face (holder with Form"AD") as standard for all holders
- ✦ ID = Ø 40, d = Ø 60 With additional 4 screw holes to DIN 2079
- Please order coolant tube separately (See page D8)
- Delivery includes : Drive keys, clamping screw and locking screw (DIN 912)
- * Delivery includes : Locking screw (both DIN 912 & DIN 6367)
- Please order locking screw (DIN6367) separately (refer page E3)

Das gesamte Aufnahmen Sortiment mit Ersatzteilen entnehmen Sie dem Bilz-Katalog
 CNC Grip / Thermo Grip www.bilz.de
 The complete chuck range also the spare parts refer to the Bilz- catalog
 CNC Grip / Thermo Grip www.bilz.de

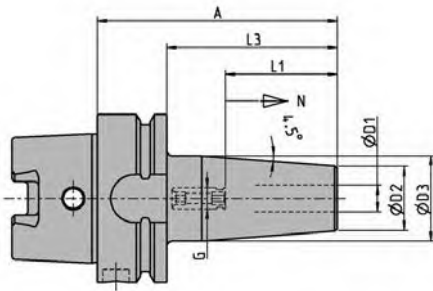
- Verfügbar ab Lager Available from stock
- kurzfristig lieferbar shortly available

T... HSK-A63, DIN69893

Schrumpffutter für (BE Typen)

Shrink Chucks for (BE Typs)

www.boehlerit.com



| T... HSK-A 63 | | | | | | | | | | | | |
|---------------|---------|---------|---------|---------|---------|--------|-------|----------------------------|-----------|-------------------------------|--|--|
| D1 [mm] | A [mm] | L3 [mm] | D2 [mm] | D3 [mm] | L1 [mm] | N [mm] | G | Bezeichnung Designation | Ident No. | Verfügbarkeit Availability | | |
| 3 | 80 | 54 | 15 | 20 | 20 | 5 | M6 | T0300/HSK-A63 | 6726618 | ○ | | |
| 4 | 80 | 54 | 15 | 20 | 20 | 5 | M6 | T0400/HSK-A63 | 6726619 | ○ | | |
| 5 | 80 | 54 | 15 | 20 | 25 | 5 | M6 | T0500/HSK-A63 | 6726620 | ○ | | |
| 6 | 80 | 54 | 21 | 27 | 36 | 10 | M5 | T0600/HSK-A63 | 6726201 | ○ | | |
| 8 | 80 | 54 | 21 | 27 | 36 | 10 | M6 | T0800/HSK-A63 | 6726202 | ○ | | |
| 10 | 85 | 59 | 24 | 32 | 42 | 10 | M8x1 | T1000/HSK-A63 | 6726203 | ● | | |
| 12 | 90 | 64 | 24 | 32 | 47 | 10 | M10x1 | T1200/HSK-A63 | 6726204 | ● | | |
| 14 | 90 | 64 | 27 | 34 | 47 | 10 | M10x1 | T1400/HSK-A63 | 6726205 | ○ | | |
| 16 | 95 | 69 | 27 | 34 | 50 | 10 | M12x1 | T1600/HSK-A63 | 6726206 | ● | | |
| 18 | 95 | 69 | 33 | 42 | 50 | 10 | M12x1 | T1800/HSK-A63 | 6726211 | ○ | | |
| 20 | 100 | 74 | 33 | 42 | 52 | 10 | M16x1 | T2000/HSK-A63 | 6726207 | ● | | |
| 25 | 115 | 89 | 44 | 52,5 | 58 | 10 | M16x1 | T2500/HSK-A63 | 6726208 | ● | | |
| 32 | 120 | 94 | 44 | 52,5 | 62 | 10 | M16x1 | T3200/HSK-A63 | 6726209 | ● | | |
| 6 | 120 | 94 | 21 | 27 | 36 | 10 | M5 | T0600-120/HSK-A63 | 6726388 | ○ | | |
| 8 | 120 | 94 | 21 | 27 | 36 | 10 | M6 | T0800-120/HSK-A63 | 6726391 | ○ | | |
| 10 | 120 | 94 | 24 | 32 | 42 | 10 | M8x1 | T1000-120/HSK-A63 | 6726392 | ○ | | |
| 12 | 120 | 94 | 24 | 32 | 47 | 10 | M10x1 | T1200-120/HSK-A63 | 6726410 | ○ | | |
| 14 | 120 | 94 | 27 | 34 | 47 | 10 | M10x1 | T1400-120/HSK-A63 | 6726401 | ○ | | |
| 16 | 120 | 94 | 27 | 34 | 50 | 10 | M12x1 | T1600-120/HSK-A63 | 6726399 | ○ | | |
| 18 | 120 | 94 | 33 | 42 | 50 | 10 | M12x1 | T1800-120/HSK-A63 | 6726539 | ○ | | |
| 20 | 120 | 94 | 33 | 42 | 52 | 10 | M16x1 | T2000-120/HSK-A63 | 6726662 | ○ | | |
| 25 | 120 | 94 | 44 | 52,5 | 58 | 10 | M16x1 | T2500-120/HSK-A63 | 6726416 | ○ | | |
| 6 | 160 | 134 | 21 | 32 | 36 | 10 | M5 | T0600-160/HSK-A63 | 6726411 | ○ | | |
| 8 | 160 | 134 | 21 | 32 | 36 | 10 | M6 | T0800-160/HSK-A63 | 6726402 | ○ | | |
| 10 | 160 | 134 | 24 | 34 | 42 | 10 | M8x1 | T1000-160/HSK-A63 | 6726403 | ○ | | |
| 12 | 160 | 134 | 24 | 34 | 47 | 10 | M10x1 | T1200-160/HSK-A63 | 6726404 | ○ | | |
| 14 | 160 | 134 | 27 | 42 | 47 | 10 | M10x1 | T1400-160/HSK-A63 | 6726405 | ○ | | |
| 16 | 160 | 134 | 27 | 42 | 50 | 10 | M12x1 | T1600-160/HSK-A63 | 6726406 | ○ | | |
| 18 | 160 | 134 | 33 | 51 | 50 | 10 | M12x1 | T1800-160/HSK-A63 | 6726407 | ○ | | |
| 20 | 160 | 134 | 33 | 51 | 52 | 10 | M16x1 | T2000-160/HSK-A63 | 6726468 | ○ | | |
| 25 | 160 | 134 | 44 | 52,5 | 58 | 10 | M16x1 | T2500-160/HSK-A63 | 6726408 | ○ | | |
| 32 | 160 | 134 | 44 | 52,5 | 62 | 10 | M16x1 | T3200-160/HSK-A63 | 6726409 | ○ | | |
| | 5025376 | | | 6738421 | | | | | | | | |

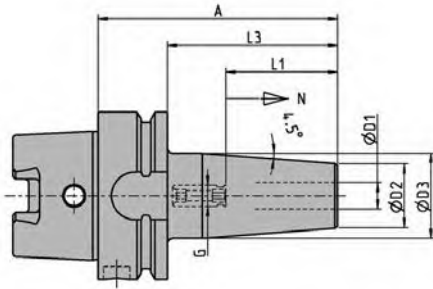
Das gesamte Aufnahmen Sortiment mit Ersatzteilen entnehmen Sie dem Bilz-Katalog
 CNC Grip / Thermo Grip www.bilz.de
 The complete chuck range also the spare parts refer to the Bilz- catalog
 CNC Grip / Thermo Grip www.bilz.de

● Verfügbar ab Lager Available from stock
 ○ kurzfristig lieferbar shortly available

T... HSK-A100, DIN69893

Schrumpffutter (für BE Typen)

Shrink Chucks for (BE Typs)



| T... HSK-A 100 | | | | | | | | | | | | |
|----------------|--------|---------|---------|---------|---------|---------|-------|----------------------------|-----------|-------------------------------|--|--|
| D1 [mm] | A [mm] | L3 [mm] | D2 [mm] | D3 [mm] | L1 [mm] | N [mm] | G | Bezeichnung Designation | Ident No. | Verfügbarkeit Availability | | |
| 6 | 85 | 56 | 21 | 27 | 36 | 10 | M5 | T0600/HSK-A100 | 6726342 | ○ | | |
| 8 | 85 | 56 | 21 | 27 | 36 | 10 | M6 | T0800/HSK-A100 | 6726343 | ○ | | |
| 10 | 90 | 61 | 24 | 32 | 42 | 10 | M8x1 | T1000/HSK-A100 | 6726344 | ● | | |
| 12 | 95 | 66 | 24 | 32 | 47 | 10 | M10x1 | T1200/HSK-A100 | 6726345 | ● | | |
| 14 | 95 | 66 | 27 | 34 | 47 | 10 | M10x1 | T1400/HSK-A100 | 6726346 | ○ | | |
| 16 | 100 | 71 | 27 | 34 | 50 | 10 | M12x1 | T1600/HSK-A100 | 6726347 | ● | | |
| 18 | 100 | 71 | 33 | 42 | 50 | 10 | M12x1 | T1800/HSK-A100 | 6726348 | ○ | | |
| 20 | 105 | 76 | 33 | 42 | 52 | 10 | M16x1 | T2000/HSK-A100 | 6726349 | ● | | |
| 25 | 115 | 86 | 44 | 53 | 58 | 10 | M16x1 | T2500/HSK-A100 | 6726350 | ● | | |
| 32 | 120 | 91 | 44 | 53 | 62 | 10 | M16x1 | T3200/HSK-A100 | 6726351 | ● | | |
| 6 | 120 | 91 | 21 | 27 | 36 | 10 | M5 | T0600-120/HSK-A100 | 6726478 | ○ | | |
| 8 | 120 | 91 | 21 | 27 | 36 | 10 | M6 | T0800-120/HSK-A100 | 6726479 | ○ | | |
| 10 | 120 | 91 | 24 | 32 | 42 | 10 | M8x1 | T1000-120/HSK-A100 | 6726755 | ○ | | |
| 12 | 120 | 91 | 24 | 32 | 47 | 10 | M10x1 | T1200-120/HSK-A100 | 6726480 | ○ | | |
| 14 | 120 | 91 | 27 | 34 | 47 | 10 | M10x1 | T1400-120/HSK-A100 | 6726833 | ○ | | |
| 16 | 120 | 91 | 27 | 34 | 50 | 10 | M12x1 | T1600-120/HSK-A100 | 6726820 | ○ | | |
| 18 | 120 | 91 | 33 | 42 | 50 | 10 | M12x1 | T1800-120/HSK-A100 | 6727035 | ○ | | |
| 20 | 120 | 91 | 33 | 42 | 52 | 10 | M16x1 | T2000-120/HSK-A100 | 6726821 | ○ | | |
| 25 | 120 | 91 | 44 | 53 | 58 | 10 | M16x1 | T2500-120/HSK-A100 | 6727037 | ○ | | |
| 6 | 160 | 131 | 21 | 32 | 36 | 10 | M5 | T0600-160/HSK-A100 | 6726645 | ○ | | |
| 8 | 160 | 131 | 21 | 32 | 36 | 10 | M6 | T0800-160/HSK-A100 | 6726646 | ○ | | |
| 10 | 160 | 131 | 24 | 34 | 42 | 10 | M8x1 | T1000-160/HSK-A100 | 6726647 | ○ | | |
| 12 | 160 | 131 | 24 | 34 | 47 | 10 | M10x1 | T1200-160/HSK-A100 | 6726648 | ○ | | |
| 14 | 160 | 131 | 27 | 42 | 47 | 10 | M10x1 | T1400-160/HSK-A100 | 6726649 | ○ | | |
| 16 | 160 | 131 | 27 | 42 | 50 | 10 | M12x1 | T1600-160/HSK-A100 | 6726650 | ○ | | |
| 18 | 160 | 131 | 33 | 51 | 50 | 10 | M12x1 | T1800-160/HSK-A100 | 6727036 | ○ | | |
| 20 | 160 | 131 | 33 | 51 | 52 | 10 | M16x1 | T2000-160/HSK-A100 | 6726643 | ○ | | |
| 25 | 160 | 131 | 44 | 60 | 58 | 10 | M16x1 | T2500-160/HSK-A100 | 6726644 | ○ | | |
| 32 | 160 | 131 | 44 | 60 | 62 | 10 | M16x1 | T3200-160/HSK-A100 | 6727038 | ○ | | |
| | | 5028428 | | | | 6738303 | | | | | | |

Das gesamte Aufnahmen Sortiment mit Ersatzteilen entnehmen Sie dem Bilz-Katalog
 CNC Grip / Thermo Grip www.bilz.de
 The complete chuck range also the spare parts refer to the Bilz- catalog
 CNC Grip / Thermo Grip www.bilz.de

● Verfügbar ab Lager Available from stock
 ○ kurzfristig lieferbar shortly available